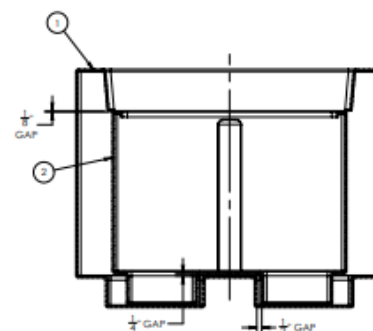
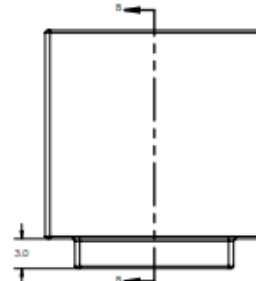
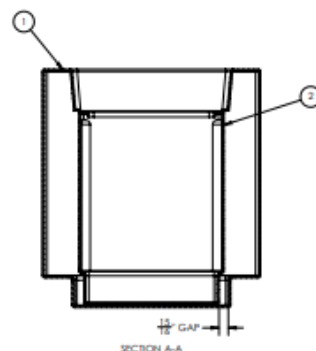
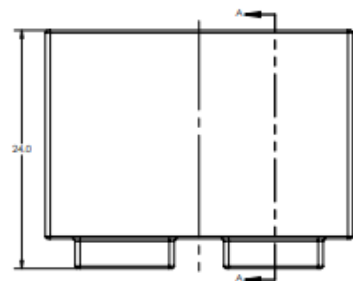
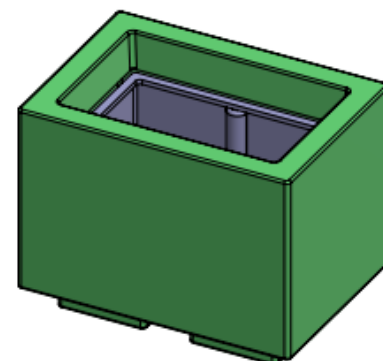
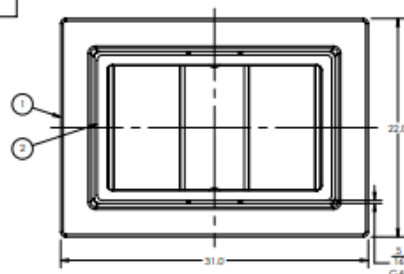
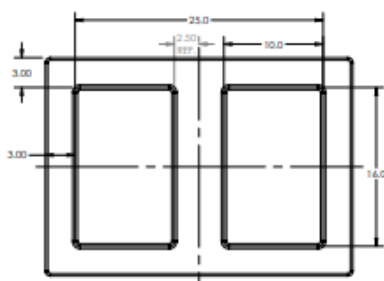




ITEM NO.	PART NUMBER	QTY.
1	31x22x24 Millennium Planter Shell	1
2	31x22x24 Millennium Planter Liner 3	1



NOTE:  
COMBINED ASSEMBLY TO WEIGH APPROX. 37 LBS. AFTER TRIMMING AT 3/16" WALL.



#### SPECS AT A GLANCE

TOP ID: 25" x 16"  
TOP OD: 31" x 22"  
BASE ID: 25" x 16"  
BASE OD: 31" x 22"  
HEIGHT: 24"  
WEIGHT: 39 LBS

DO NOT SCALE DRAWING.

All measurements are rounded to the closest quarter inch and may not be exact due to manufacturing variances.  
This document contains TERRACAST® PROPRIETARY INFORMATION. No intellectual property right or license is granted by TERRACAST® in connection with it. It is delivered on the express condition that the document and the information contained in it shall be treated as confidential, shall not be used for and purpose other than that for which it is hereby delivered (the use and maintenance of the product supplied). It shall not be disclosed in whole or part to third parties and shall not be duplicated in any manner without TERRACAST®'s prior written consent.

## OCC Outdoors

TITLE

Millennium Rectangular Assembly

PART#

TSR31-24

DRAWN  
KT

SIZE

MATERIAL

DWG NO

DATE

REV

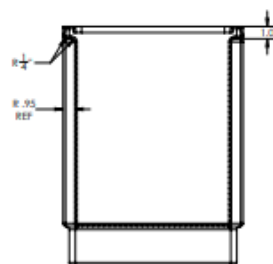
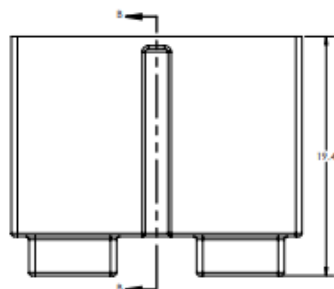
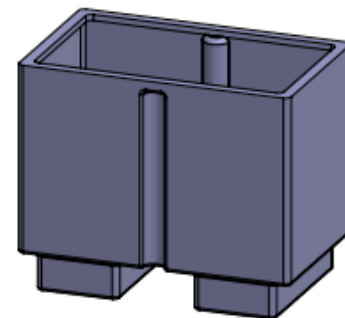
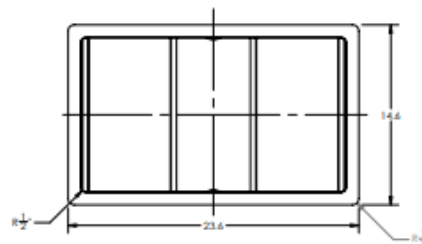
LLDPE Resin

03-01-21

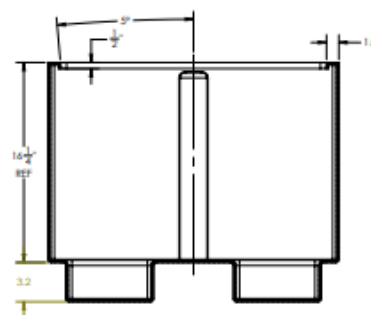
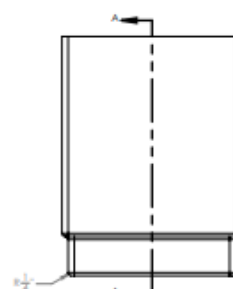
SCALE

WEIGHT

SHEET 1/3



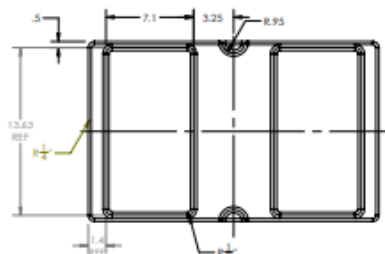
SECTION B-B



SECTION A-A

NOTE:

PART TO WEIGH APPROX. 12.25 LBS. AFTER TRIMMING AT 3/16" WALL.



### SPECS AT A GLANCE

TOP ID: 22.6" x 13.6"  
 TOP OD: 23.6" x 14.6"  
 BASE ID: 22.6" x 13.6"  
 BASE OD: 23.6" x 14.6"  
 HEIGHT: 19.4"  
 WEIGHT: 13 LBS

DO NOT SCALE DRAWING.

All measurements are rounded to the closest quarter inch and may not be exact due to manufacturing variances.

This document contains TERRACAST® PROPRIETARY INFORMATION. No intellectual property right or license is granted by TERRACAST® in connection with it. It is delivered on the express condition that the document and the information contained in it shall be treated as confidential, shall not be used for and purpose other than that for which it is hereby delivered (the use and maintenance of the product supplied); it shall not be disclosed in whole or part to third parties and shall not be duplicated in any manner without TERRACAST®'s prior written consent.

## OCC Outdoors

TITLE

**Millennium Rectangular Liner**

PART#

**TSR31-24-Liner**

DRAWN

KT

SIZE

MATERIAL

DWG NO

DATE

REV

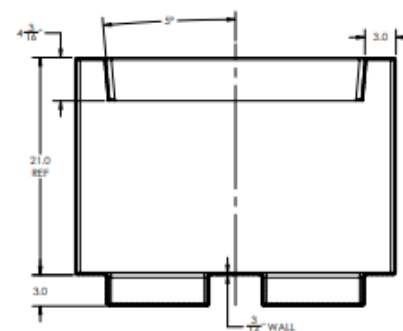
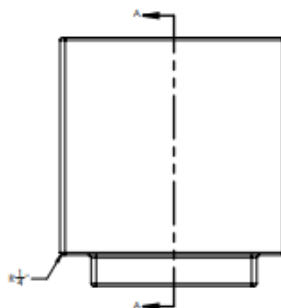
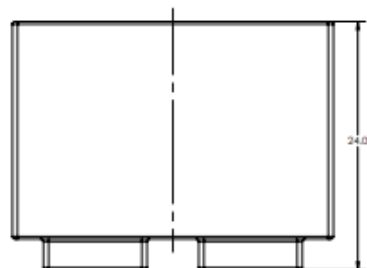
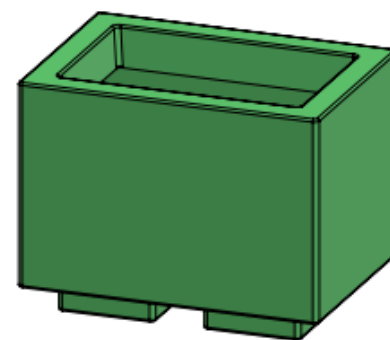
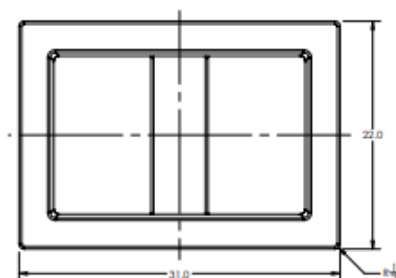
LLDPE Resin

03-01-21

SCALE

WEIGHT

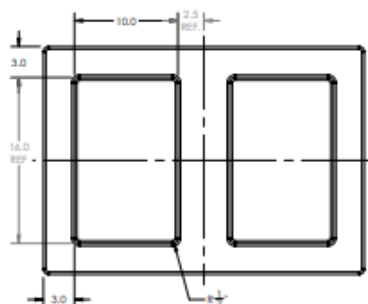
SHEET 2/3



NOTE:

PART TO WEIGH APPROX. 25 LBS. AFTER TRIMMING AT 3/16" WALL.

SECTION A-A



#### SPECS AT A GLANCE

TOP ID: 25" x 16"  
TOP OD: 31" x 22"  
BASE ID: 25" x 16"  
BASE OD: 31" x 22"  
HEIGHT: 24"  
WEIGHT: 26 LBS

DO NOT SCALE DRAWING.

All measurements are rounded to the closest quarter inch and may not be exact due to manufacturing variances.

This document contains TERRACAST® PROPRIETARY INFORMATION. No intellectual property right or license is granted by TERRACAST® in connection with it. It is delivered on the express condition that the document and the information contained in it shall be treated as confidential, shall not be used for and purpose other than that for which it is hereby delivered (the use and maintenance of the product supplied). It shall not be disclosed in whole or part to third parties and shall not be duplicated in any manner without TERRACAST®'s prior written consent.

## OCC Outdoors

TITLE

Millennium Rectangular

PART#

TSR31-24

DRAWN

KT

SIZE

MATERIAL

DWG NO

DATE

REV

LLDPE Resin

03-01-21

SCALE

WEIGHT

SHEET 3/3