

Parts List

Overall Dimensions

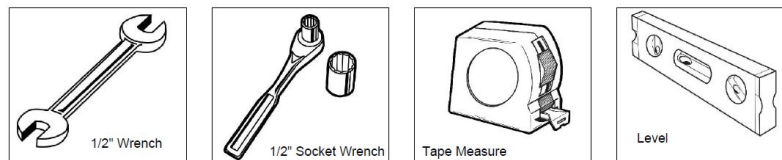
Hardware Included

Assembly Instructions

Attach the 800 Seats to the 800 Frame as shown using specified hardware.

ITEM NO.	PartNo	DESCRIPTION	QTY
1	P-R800S-2	700/800 inground rod bench frame, 2 seat	1
2	P-R800-S	800 Straight Rod Seat	2
3	33-06-0082	5/16" x 1 1/2" Button Torx Bolt (SS)	16
4	33-05-0029	5/16" x 1" Machine Bolt (SS)	8
5	33-03-0012	5/16" Kep Nut (SS)	8

Tools Required



WARRANTY: OCCOutdoors, Inc. guarantees all items for one full year to be free of defects in workmanship or materials when installed and maintained properly. We agree to repair or replace, any items determined to be defective. Items specifically not covered by this warranty include vandalism, manmade or natural disasters, lack of maintenance, normal weathering or wear and tear due to public abuse.

NOTES:

1. INSTALLATION TO BE COMPLETED IN ACCORDANCE WITH MANUFACTURER'S SPECIFICATIONS.
2. ALL DIMENSIONS ARE CONSIDERED TRUE AND PERFECT MANUFACTURER'S SPECIFICATIONS
3. DO NOT SCALE DRAWING.

This document contains OCC Outdoors Proprietary Information. No intellectual copyright or license is granted by OCC Outdoors in connection with it. It is delivered on the express condition that the document and the information contained in it shall be treated as confidential, shall not be used for and purpose other than that for which it is hereby delivered (the use and maintenance of the product supplied). It shall not be disclosed in whole or part to third parties and shall not be duplicated in any manner without OCC Outdoors's prior approval.

OCC Outdoors Products

PH: 1-800-821-7670

EMAIL - occcontact@occoutdoors.com

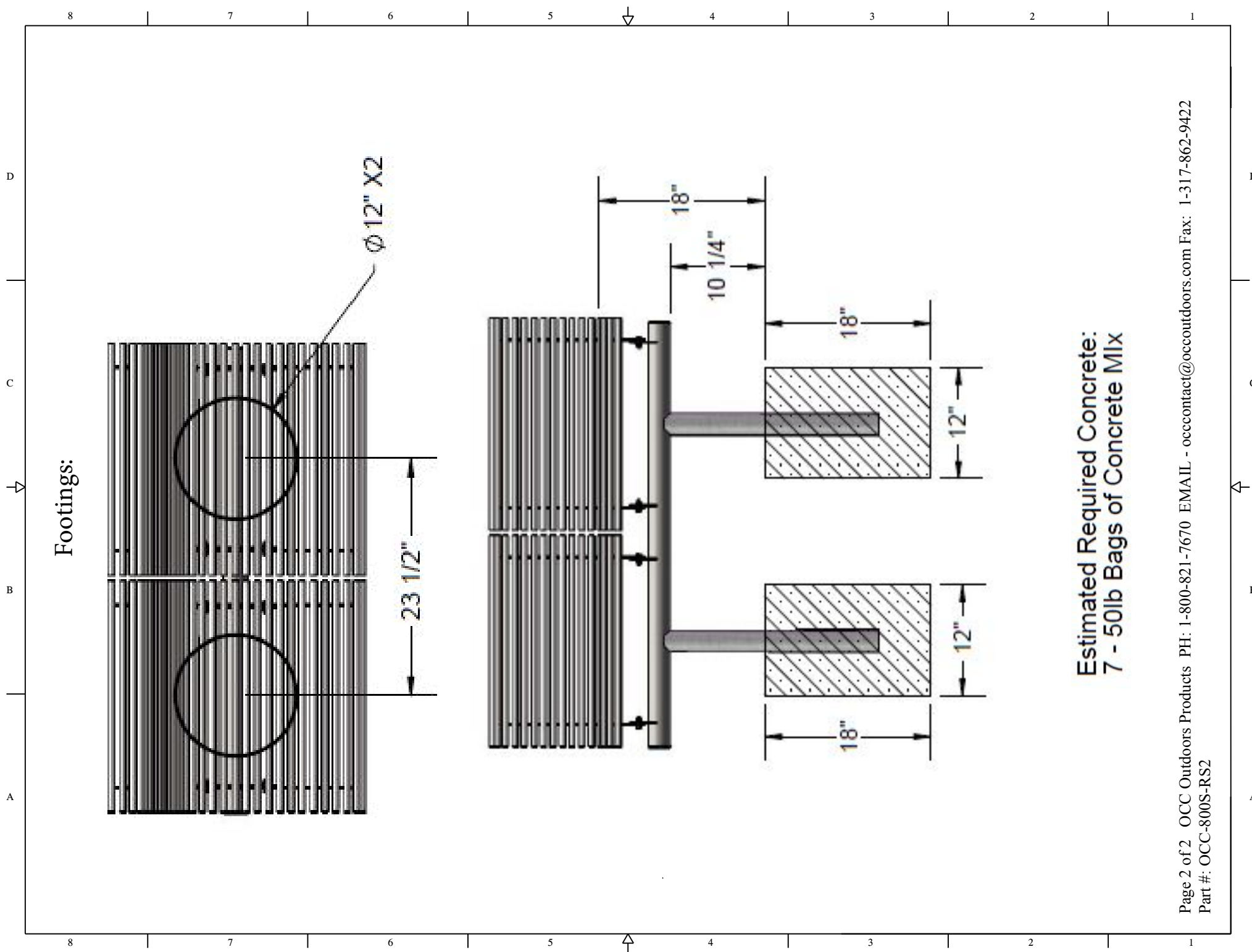
Fax: 1-317-862-9422

Part #: OCC-800S-RS2

Date: 4/22/2016

Page 1 of 2

**OCC Outdoors Palmetto Rod
Style In-Line Design 2-Seat
Contoured Bench with Powder
Coat Finish and In-Ground
Mount**



Footings:

Estimated Required Concrete:
7 - 50lb Bags of Concrete Mix