



**Made in the USA!!**



**Proudly made in the USA**

Assembly and mounting instructions are on Page 2.

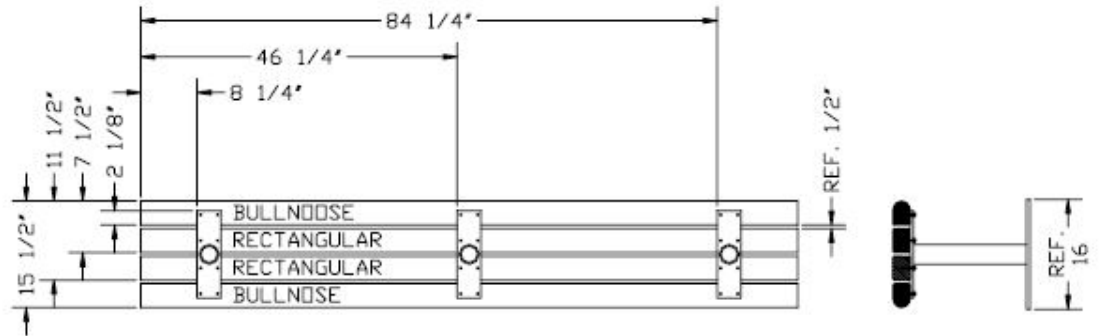
**WARRANTY:** OCCOutdoors, Inc. guarantees all items for one full year to be free of defects in workmanship or materials when installed and maintained properly. We agree to repair or replace, any items determined to be defective. Items specifically not covered by this warranty include vandalism, manmade or natural disasters, lack of maintenance, normal weathering or wear and tear due to public abuse.

**NOTES:**

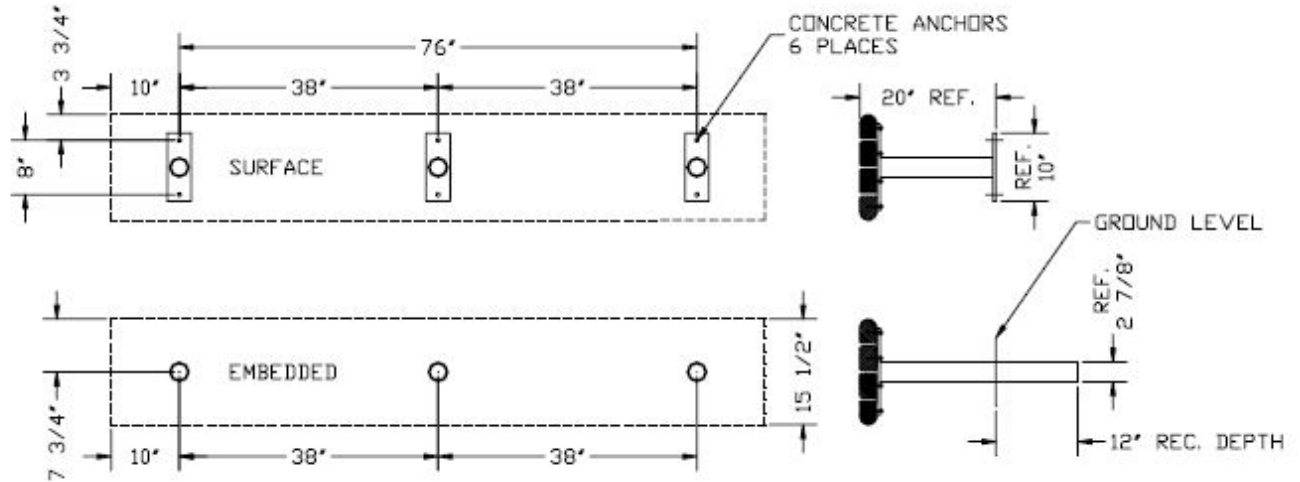
1. INSTALLATION TO BE COMPLETED IN ACCORDANCE WITH MANUFACTURER'S SPECIFICATIONS.
2. ALL DIMENSIONS ARE CONSIDERED TRUE AND REFLECT MANUFACTURER'S SPECIFICATIONS
3. DO NOT SCALE DRAWING.

This document contains OCC Outdoors Proprietary Information. No intellectual copyright or license is granted by OCC Outdoors in connection with it. It is delivered on the express condition that the document and the information contained in it shall be treated as confidential, shall not be used for and purpose other than that for which it is hereby delivered (the use and maintenance of the product supplied). It shall not be disclosed in whole or part to third parties and shall not be duplicated in any manner without OCC Outdoors's prior approval.

**Diagram 1: 8' Portable Seat Layout**



**Diagram 2: 8' Seat Surface Mount Concrete Anchor Placement (6)  
8' In-Ground (Embedded) Mounting Hole Placement (3)**



**OCC Outdoors Products**

PH: 1-800-821-7670

EMAIL - occcontact@occoutdoors.com Fax: 1-317-862-9422

**Part #: GW-BLBen Greenwood 8' Backless Park Bench**

## 8' Greenwood Backless Park Bench Assembly Instructions

1. Unpack and lay out pieces to assemble. Verify that the parts, quantity, and dimensions match those on the enclosed bill of material.
2. Begin by placing two bull nose boards down on the ground or work area with curved side facing away from each other. Place the two rectangular boards between the two bull nose boards. Begin with one bull nose board and use other boards as working shims.
3. Place one weldment with plate having 8 drilled holes down against the boards and locate plate at a distance of 8 1/4 inches from plate side edge to end of bull nose and at a distance of 2 1/8 inches from plate end edge to flat side of bull nose. Use a hand square to line up plate on the bull nose surface. **See diagram 1.**
4. Drill 5/32 diameter pilot hole (two places) into the board and install two 1/4 x 2 screws into the board. (use end 2 holes in metal plate of weldment as a drill guide)
5. Place the second weldment with plate having 8 drilled holes down against the board and locate at a distance of 46 1/4 inches from plate side edge to same end of bull nose used in step 4 and at a distance of 2 1/8 inches from plate end edge to flat side of bull nose. **See diagram 1.**
6. Drill 5/32 diameter pilot hole (two places) into the board and install two 1/4 x 2 screws into the board. (use end 2 holes in metal plate of weldment as a drill guide)
7. Place the third weldment with plate having 8 drilled holes down against the board and locate at a distance of 84 1/4 inches from plate side edge to same end of bull nose used in step 4 and at a distance of 2 1/8 inches from plate end edge to flat side of bull nose. **See diagram 1.**
8. Locate one rectangular board at a distance of 8 1/4 inches from plate side edge to end of board and at a distance of 7 1/2 inches from extreme curved side of secured bull nose at both ends of rect. board. (Ref. 1/2 inch gap between sides of boards at each end.) **See diagram 1.**
9. Drill 5/32 diameter pilot hole (six places) into the board and install six 1/4 x 2 screws into the board. (use second line of 2 holes in metal plate of weldment as a drill guide)
10. Locate second rectangular board at a distance of 8 1/4 inches from plate side edge to end of board and at a distance of 11 1/2 inches from extreme curved side of secured bull nose at both ends of rectangular board. (Ref. 1/2 inch gap between sides of rectangular boards at each end.)
11. Drill 5/32 diameter pilot hole (six places) into the board and install six 1/4 x 2 screws into the board. (use third line of 2 holes in metal plate of weldment as a drill guide)
12. Locate second bull nose board at a distance of 8 1/4 inches from plate side edge to end of board and at a distance of 15 1/2 inches from extreme curved sides of two bull nose boards at both ends.(Ref. 1/2 inch gap between sides of rectangular boards at each end.)
13. Drill 5/32 diameter pilot hole (six places) into the board and install six 1/4 x 2 screws into the board. (use fourth line of 2 holes in metal plate of weldment as a drill guide)
14. Check squareness of seat before tightening screws.

## 8' Greenwood Backless Park Bench Mounting Instructions

1. Portable seat 210003 will rest on any flat, even surface-no mounting required
2. Surface mount seat 210001 mounts with 1/2 inch anchors into concrete surface at dimensions as shown on **diagram 2.**
3. Embedded mount seat 210002 mounts by setting in filled holes at dimensions as shown on **diagram 2.**