

Standard Steel Top Receptacle with Recyclables Plaque

## 36-Gallon Colonial Recycling Bin

All steel heavy duty welded construction recycle bin with galvanneal spun steel top with two heavy stainless steel cable anchors and heavy duty rotary molded 36-gallon polyethylene liner and anchor kit. Painted with our Zinc Advantage paint system that includes rich primer and super TGIC Polyester paint (See page 2 for available colors and Super TGIC Finish details). Manufactured in Indiana.

### Steel Recycle Bin Body Specifications

- Overall size: w28 1/2" wide x 39" tall
- Main body 22 7/8" (two rings)
- Slat width 22 3/8"
- Slats 1/4" x 1" flat steel
- Gap between slats 3/4"
- Weight (weight is an average with options) 160 pounds

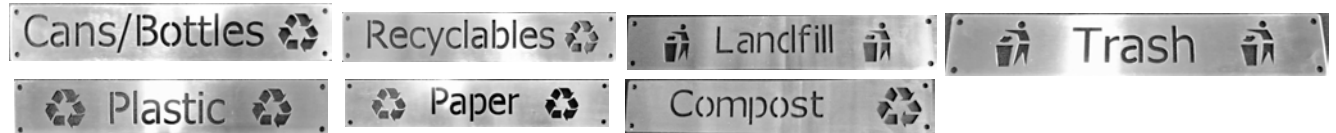
### Steel Spun Top Specifications

- Diameter: 21 1/2"
- Opening: 11"
- Material: 16 gauge galvanneal steel (Material thickness may vary during spinning operation)
- Design; Centered funnel design to catch trash with the outer surface inclined to eliminate the 60% of precipitation.

### Liner Specifications

36-gallon round heavy rotary molded liner standard, approximately 1/8 thick wall with cut in hand grips and optional drain holes.

### Recycle Plaque Text Options: 18 Gauge Laser Cut SS Plaques



### Mounting Options: See Web for Pricing

Surface Mount Standard  
Pedestal Mount Optional

### Top Options:: See Web for Pricing

Steel Top, LG Rain  
Guard, Removable  
Ash Urn

Steel Top, LG Rain  
Guard, Covered Ash  
Urn

Steel Top (Standard)

Steel Top, LG Rain Guard

Steel Top, LG Ash Urn



Bottom view showing Leveling feet and anchor Bolt



- Pre-drilled anchor Holes
- 3/8" Zinc Plated Anchor Bolt and Lead Anchor Included
- 3/8" Zinc Plated Washer

OCCOutdoors, Inc. Warranty: 20 Years Structural and one year paint when installed and maintained properly. We agree to repair or replace, any items determined to be defective. Items specifically not covered by this warranty include vandalism, man-made or natural disasters, lack of maintenance, normal weathering or wear and tear due to public abuse.

#### NOTES:

1. INSTALLATION TO BE COMPLETED IN ACCORDANCE WITH MANUFACTURER'S SPECIFICATIONS.
2. ALL DIMENSIONS ARE CONSIDERED TRUE AND REFLECT MANUFACTURER'S SPECIFICATIONS
3. DO NOT SCALE DRAWING.

OCC Outdoors Products

PH: 1-800-821-7670

EMAIL - occcontact@occoutdoors.com

Fax: 1-317-862-9422

## 36-Gallon Colonial Recycling Bin

Part #: Recy-Col-FT-36

Date:3/1/2018

Page 1 of 2

v 1.1

This document contains OCC Outdoors Proprietary Information. No intellectual copyright or license is granted by OCC Outdoors in connection with it. It is delivered on the express condition that the document and the information contained in it shall be treated as confidential, shall not be used for and purpose other than that for which it is hereby delivered (the use and maintenance of the product supplied). It shall not be disclosed in whole or part to third parties and shall not be duplicated in any manner without OCC Outdoors's prior approval.

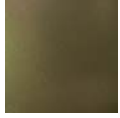
## OCC Colors and Paint Details

Bench Colors: OCC offers hundreds of color including the standard RAL colors, Architectural series and custom mixed colors. Please contact us with you color requirements. For more details please go to: [www.occoutdoors.com/blog/understanding-nonstandard-colors-cost](http://www.occoutdoors.com/blog/understanding-nonstandard-colors-cost).

**Black (RAL 9005)**



**Bronze (C33)**



**Silver Gray (70049)**



**Green (RAL 6005)**



**Blue (RAL 5012)**



**Burgundy (RAL 3004)**



**Color Matching Information:** OCCOutdoors makes every effort to present the planter colors as accurately as possible. The planter colors have been produced electronically and are provided for general color information and illustration purposes only. Because of the differences in computer monitors, printers, other hardware and software combinations, the depicted results are intended to be used as approximations of color and not as definitive representations and should not be relied upon or used as such. We cannot guarantee you will achieve desired results without verifying an actual color sample of your actual color selection. For specific advice regarding your project, we recommend that you contact OCC Outdoors: Phone: 1-800-821-7670 email: [occcontact@occoutdoors.com](mailto:occcontact@occoutdoors.com)

## Zinc Advantage Process Details:

Zinc rich primer & Super TGIC powder coat Finishing operations.

1. Sand blasts each unit down to shiny metal.
2. Clean and hand inspects each unit.
3. Powder coat with 70 % zinc rich epoxy resin primer.
4. Partially bake the primer.
5. Powder coat with SUPER TGIC Polyester finish coat.
6. Final bake, creating a molecular bond between the steel, primer and finish coat.
7. Each part is tested by a Xylene test to insure a complete cure.

## Advantages:

1. A very tough durable finish with 5 times the fade resistance of standard TGIC powder coatings with a 3H pencil hardness. (All test conducted in South Florida.)
2. If scratched through to the metal, the zinc rich primer greatly reduce rust and the potential for the migration of rust.
3. This system is cured and each unit test for cure so many types of paint used for graffiti can be clean with mild solvents.

**Our paint manufacturer's Zinc Rich Primer TGIC Polyester out lasts all major competitors on the 4000 hour salt spray test per ASTM B117. Detailed reports available by request.**