



36-Gallon 3-Bay Recycling Bin

Laser cut side panels reduces the weight but not the appearance. Customized to meet your recycle needs what ever they may be! Each section has a 36-gallon heavy duty polyethylene liner. Square liners provide a large capacity recycle bin in minimum space. **Side access door is lockable and provides easy access for emptying. Liners and Anchor kit all included!**

- Available in Green, Black, Brown or Blue, silver Gray or Burgundy. Custom colors available upon request. **See Page 2 for paint details.**
- Large capacity 36-gallon liners. Heavy rotary molded liners, twice the thickness of most vacuum molded liners. Square liners provide a large capacity recycle bin in minimum space.
- Side access door is lockable and provides easy access for emptying.
- Super TGIC Powder coated with two options, zinc advantage or Clear advantage paint system. **Paint options details on page 2.**
- Steel flat top or recycled plastic top with (2) Laser Cut 18-Gauge SS Recycle Plaques. The first area to typically get damaged on any receptacle is the top. The advantage of the recycled plastic top over a steel top is the plastic can get scuffed but will never rust.
- All openings will be manufactured using our standards unless otherwise requested.
- Weight: 270 lbs. Dimensions: 22" wide x 33" High x 58" Long

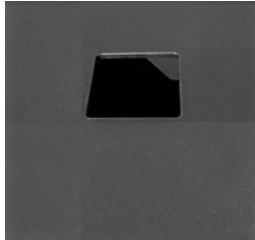
Available Top Options:

Flat Steel Top of Black Recycled Plastic Top
Single opening shown for illustrative purposes.

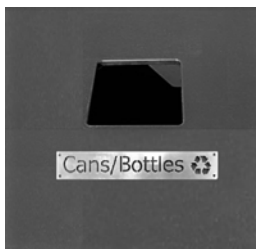
Steel Top



Black Recycled Plastic Top



Black Recycled Plastic Top w/
Cans/Bottles Recycle Plaque



Full Rain Guard Option
Dual top shown for illustrative purposes



PlaqueText Options:
Sides 1, 2, & 3 can have different lplaques

- Cans/Bottles
- Plastic
- Paper
- Trash
- Recyclables
- Compost
- Landfill

OCCOutdoors, Inc. Warranty: 20 Years Structural and one year paint when installed and maintained properly. We agree to repair or replace, any items determined to be defective. Items specifically not covered by this warranty include vandalism, man-made or natural disasters, lack of maintenance, normal weathering or wear and tear due to public abuse.

- NOTES:
1. INSTALLATION TO BE COMPLETED IN ACCORDANCE WITH MANUFACTURER'S SPECIFICATIONS.
 2. ALL DIMENSIONS ARE CONSIDERED TRUE AND REFLECT MANUFACTURER'S SPECIFICATIONS
 3. DO NOT SCALE DRAWING.

This document contains OCC Outdoors Proprietary Information. No intellectual copyright or license is granted by OCC Outdoors in connection with it. It is delivered on the express condition that the document and the information contained in it shall be treated as confidential, shall not be used for and purpose other than that for which it is hereby delivered (the use and maintenance of the product supplied). It shall not be disclosed in whole or part to third parties and shall not be duplicated in any manner without OCC Outdoors's prior approval.

OCC Outdoors Products

PH: 1-800-821-7670

EMAIL - occcontact@occoutdoors.com Fax:
1-317-862-9422

Part #: RECY-LZR-FT-(3)36-SA

Date: 3/2/2018

Page 1 of 2

v 1.1

36-Gallon Laser Cut Steel
3 Bay Recycling Bin With
Side Access

OCC Colors and Paint Details

Bench Colors: OCC offers hundreds of color including the standard RAL colors, Architectural series and custom mixed colors. Please contact us with your color requirements. For more details please go to: www.occoutdoors.com/blog/understanding-nonstandard-colors-cost.

OCC Standard Colors

Black (RAL 9005)



Green (RAL 6005)



Bronze (C33)



Blue (RAL 5012)



Silver Gray (70049)



Burgundy (RAL 3004)



Zinc Advantage Process Details:

Zinc rich primer & Super TGIC powder coat Finishing operations.

1. Sand blasts each unit down to shiny metal.
2. Clean and hand inspects each unit.
3. Powder coat with 70 % zinc rich epoxy resin primer.
4. Partially bake the primer.
5. Powder coat with SUPER TGIC Polyester finish coat.
6. Final bake, creating a molecular bond between the steel, primer and finish coat.
7. Each part is tested by a Xylene test to insure a complete cure.

Advantages:

1. A very tough durable finish with 5 times the fade resistance of standard TGIC powder coatings with a 3H pencil hardness. (All test conducted in South Florida.)
2. If scratched through to the metal, the zinc rich primer greatly reduce rust and the potential for the migration of rust.
3. This system is cured and each unit test for cure so many types of paint used for graffiti can be clean with mild solvents.

Our paint manufacturer's Zinc Rich Primer TGIC Polyester out lasts all major competitors on the 4000 hour salt spray test per ASTM B117. Detailed reports available by request.